



SKU# 22150072

TC36, BIRCHWOOD LOG SET & BURNER INSTALLATION MANUAL



Visit www.townandcountryfireplaces.com for the most recent version of this manual

Contents of Package

- TC36 Birchwood Burner Assembly
- Log Grate
- Ember wool
- Coal chunks
- Log set



Figure 1: TC36 and TC36 Arch - Birchwood burner kit contents.

The Birchwood Log Set must use burner supplied with the kit.

Burner/Grate Installation



Figure 2: Access cover to valve control center.

- The decorative panels should be installed before the burner and log grate are installed. However, if the access cover to the valve control center (Figure 2) is to be removed, the panels will need to be installed later once the electrical connections are made and access cover has been reinstalled. See “Special Note regarding the access cover:” on page 3.

Special Note regarding the access cover:

The access cover must be removed so that the pilot assembly wires can be attached to the control module. If the fireplace has not been positioned in its final location, access to the control module can be achieved without removing the access cover. If fireplace is in its final location, the access cover will need to be removed.

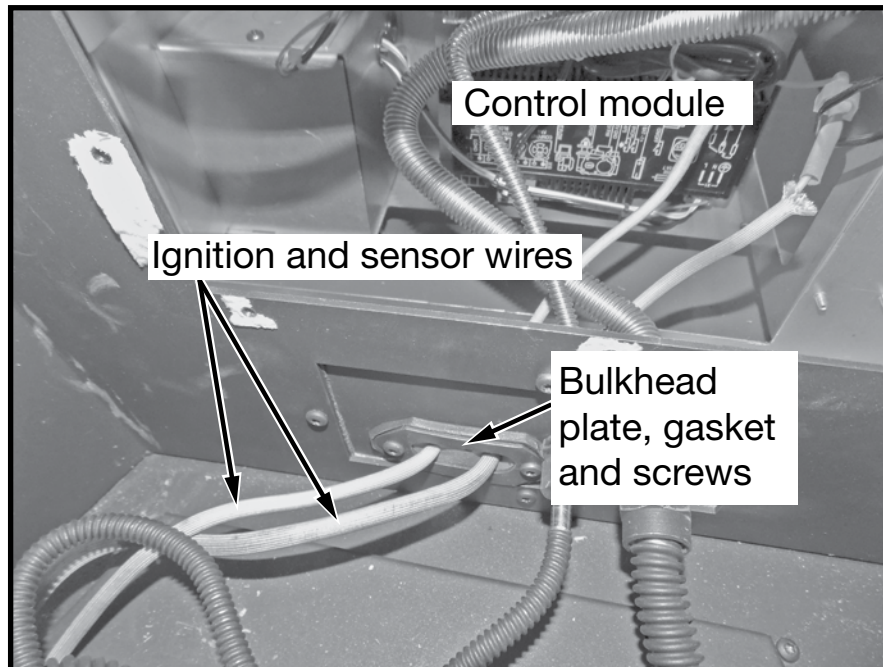


Figure 3: Ignition and sensor wires routing with access cover removed.

1. For ease of installation, place the burner tray onto the burner base plate but do not secure it to the burner base plate yet.
2. Remove the bulkhead screws, plate and gasket (Figure 3) to enable the ignition and sensor wires to be fed through the gasket and side wall and to the control module.

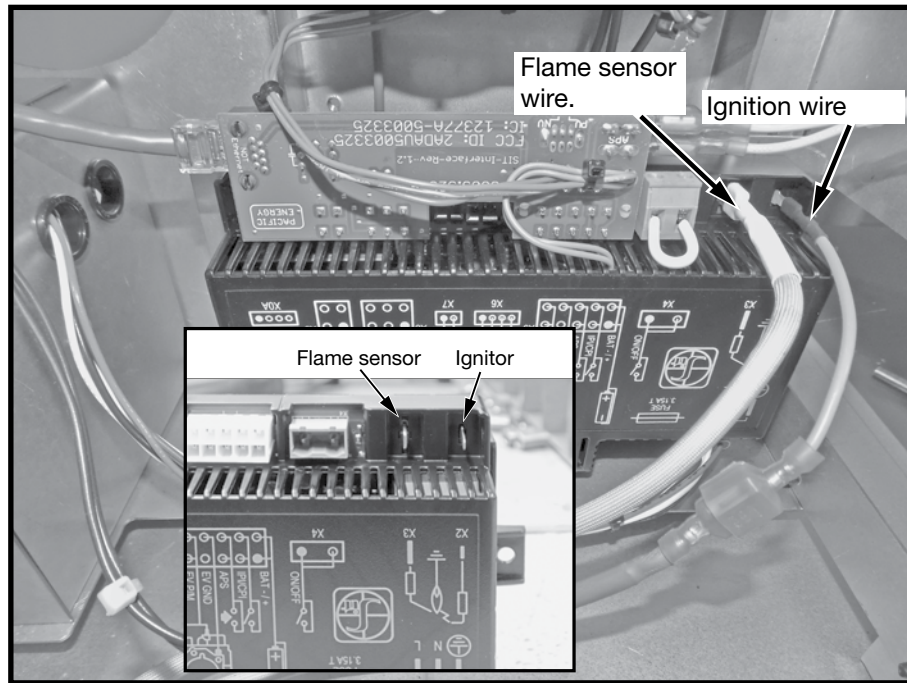


Figure 4: Control module & pilot connections.

3. Connect the ignition and sensor wires to the control module as shown in Figure 4.
4. Reattach the bulkhead plate, gasket and securing screws.
5. Reattach the access cover plate if it was removed.
6. Install the decorative panel set now while the burner is still able to be maneuvered. Refer to fiber panel set installation instructions located in the fireplace installation manual or porcelain panel installation instructions which is included in the porcelain panel set package.
7. Slide the burner to the left as far as possible without making contact with the decorative panels once the panels have been installed. This will provide room to connect the gas lines.
8. Attach the pilot and gas supply lines to the bulk head fittings and tighten (Figure 5). Ensure the connections are gas tight.

If installing this burner into an outdoor unit, please See “Outdoor Pilot Installation” on page 7 before continuing.

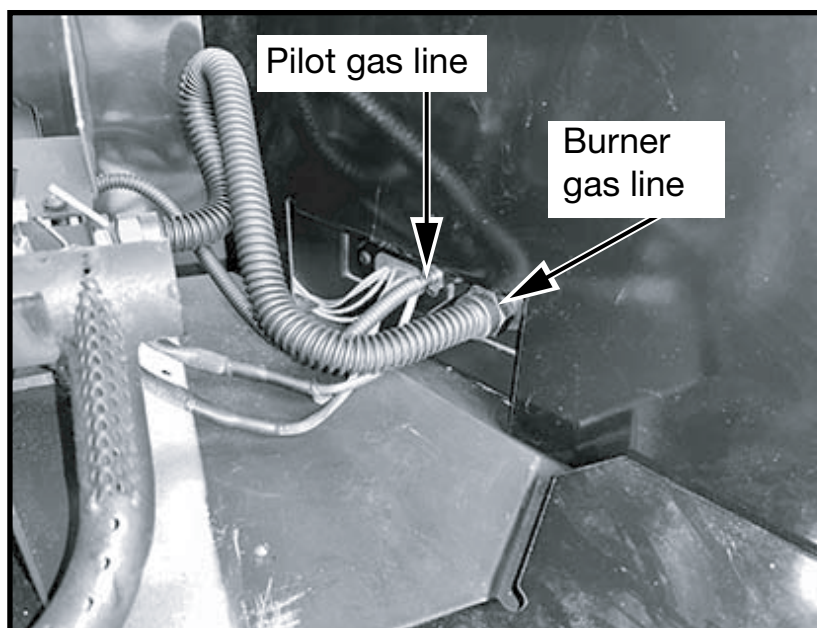


Figure 5: Gas line connections.

9. With the electrical and gas lines now connected, slide the burner back to the center of the firebox.
10. Locate the screws in the firebox bottom shield (Figure 6) and attach the burner using two long screws provided. Shift the burner to the left so that the key hole slots are secured with the screws (Figure 7).

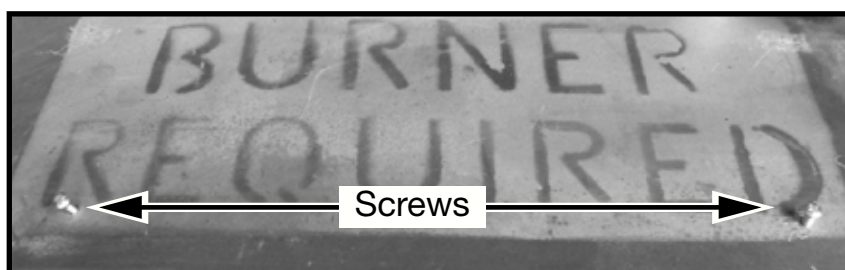


Figure 6: Burner base plate.



Figure 7: Mounting burner to firebox bottom shield.

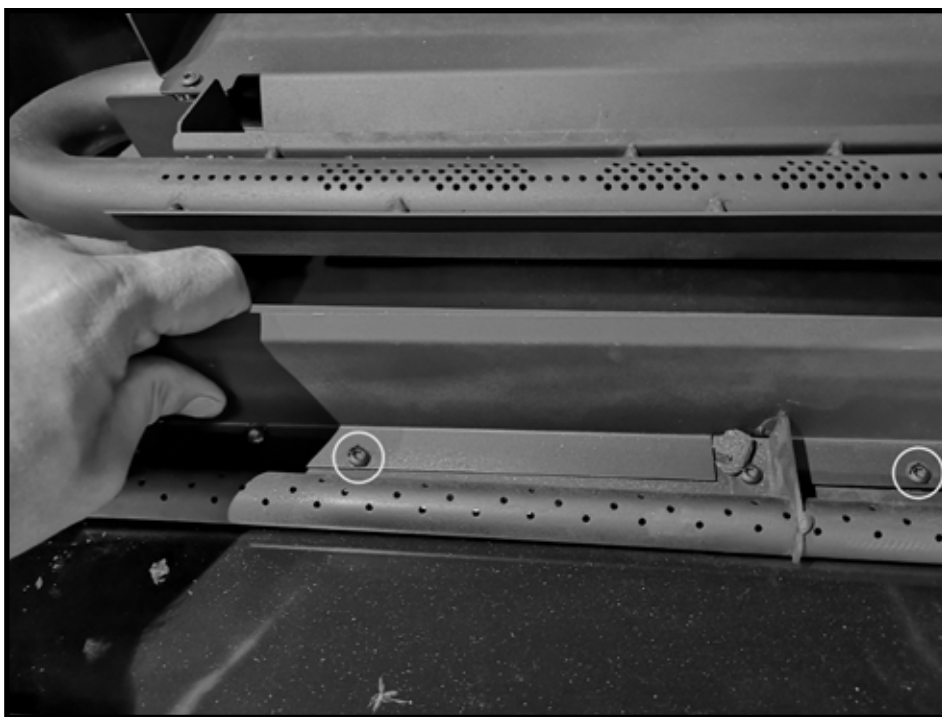


Figure 8: Securing air deflector to the burner.

11. Attach the air deflector (Figure 8) to the front of the burner tray using two screws provided.
12. Place the log grate over the burner and locate the screw slots at the base of the two front legs of the log grate (Figure 9). Use screws provided to secure the log grate to the burner base plate.

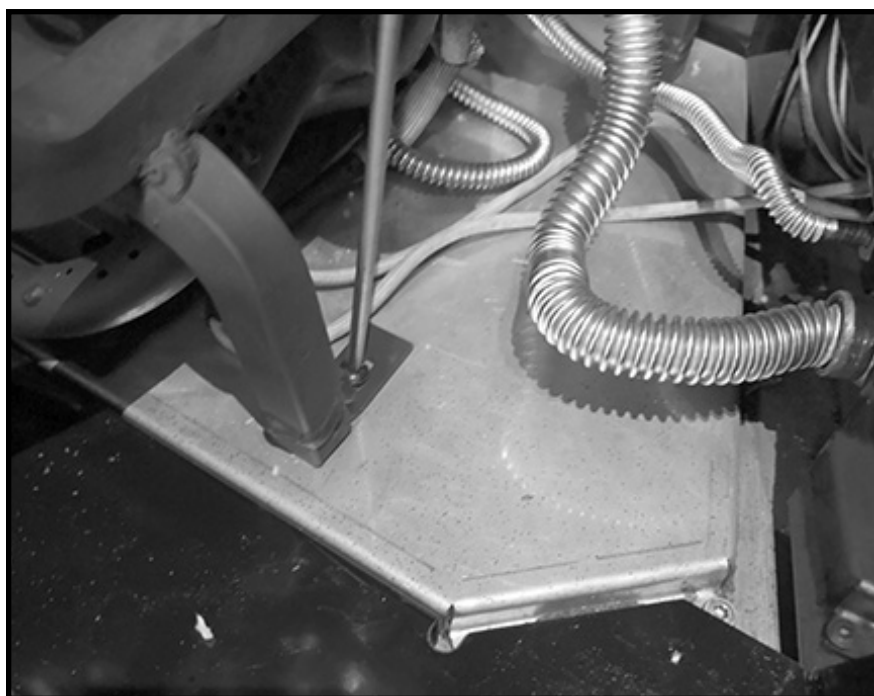


Figure 9: Securing log grate to the floor.

Outdoor Pilot Installation

The TC36 Outdoor unit comes with the pilot assembly pre-installed. Follow the instructions below to remove the pilot that comes with the burner and attach the pre-installed pilot.

1. Loosen the screws securing the pilot mounting bracket to the back of the burner tray then slide the pilot and bracket up to disengage the bracket from the screws. (Figure 10)



Figure 10: Remove burner pilot.

2. Remove the pilot mounting bracket from the burner pilot by removing the two screws securing it to the pilot. (Figure 11)



Figure 11: Remove pilot mounting bracket.

3. Secure the pilot mounting bracket to the Unit pilot with the previously removed screws. (Figure 12)



Figure 12: Attach pilot mounting bracket to Unit pilot.

4. Engage the pilot mounting bracket over the screws in the back of the burner tray and tighten them to secure the Unit pilot in place. (Figure 13)



Figure 13: Attach the Unit pilot to the burner tray.

Birchwood Log Kit Contents

The Birchwood Log Set comes with the following pieces:

Eight log pieces and two bags of ember material and an ember bed piece.



Figure 14: Log set.

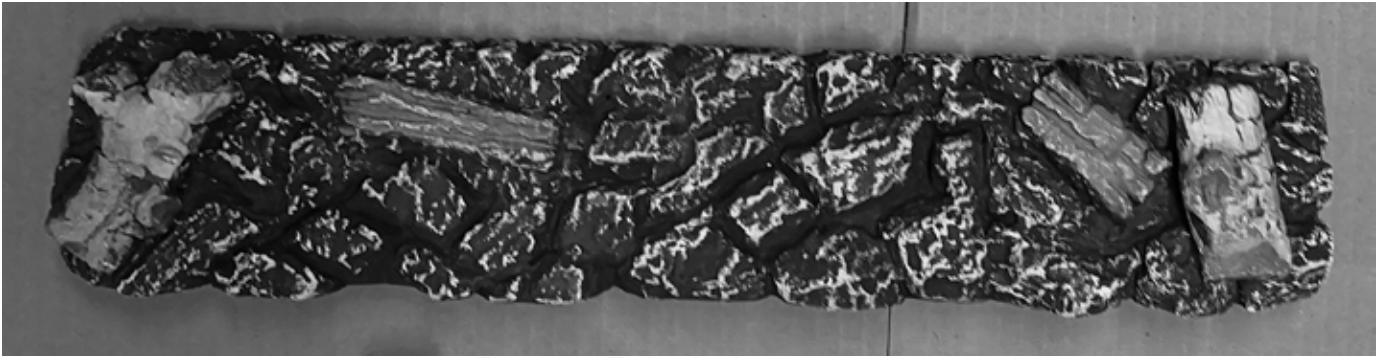


Figure 15: Ember bed.

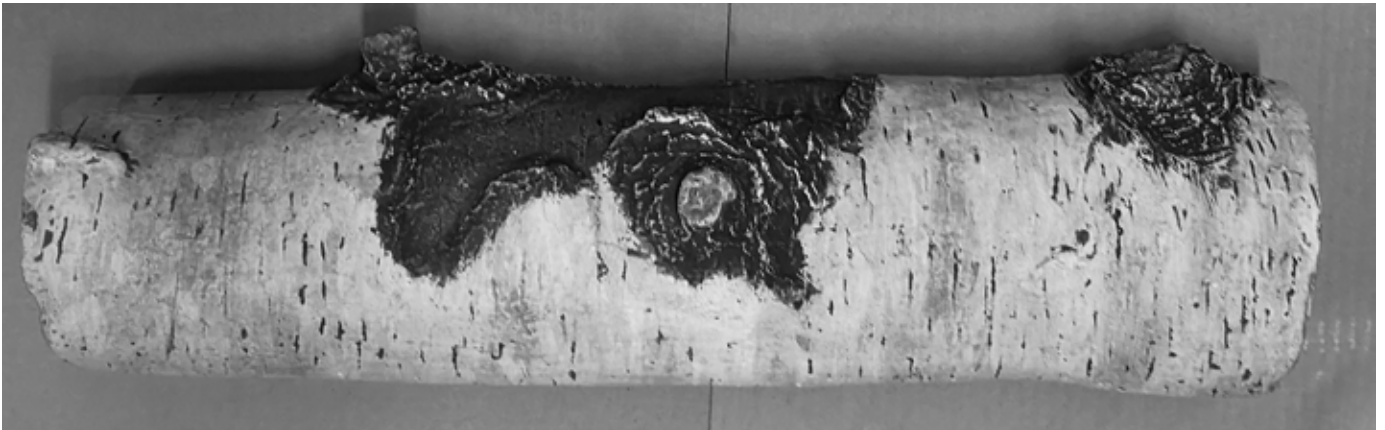


Figure 16: Birchwood log No. 2.(Main log)

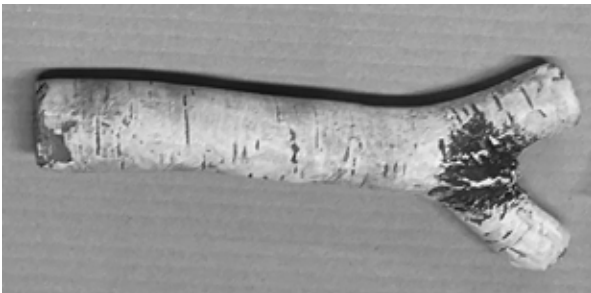


Figure 17: Birchwood log No. 3.

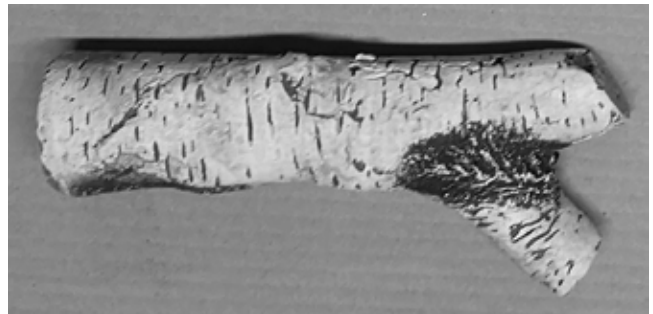


Figure 18: Birchwood log No. 4.



Figure 19: Birchwood log No. 5.



Figure 20: Birchwood log No. 6.



Figure 21: Birchwood log No. 7.



Figure 22: Birchwood log No. 8.

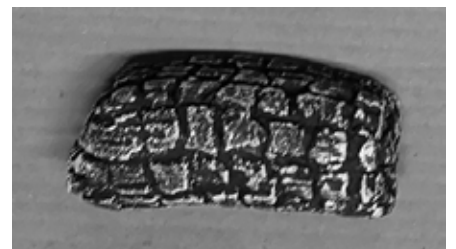


Figure 23: Birchwood log No. 9.

Log set placement



Figure 24: Burner and log grate installed.

1. With the burner, panels, and log grate pre-installed (Figure 24), spread the contents of the ember wool bag around the fireplace floor. Break the ember wool into small pieces then spread it over the upper and lower burner tubes. Cover the gas supply hoses and electrical cables and connections with ember wool (Figure 25) but do not cover the pilot assembly. The bag of ember chunks will be distributed once all of the logs are in place.



Figure 25: Ember wool distribution.



Figure 26: Ember bed in place.



Figure 27: Birchwood log No. 2 in place.

2. Place Ember bed on the back of the burner assembly as shown in (Figure 26).
3. Place log 2 on the log grate as shown in (Figure 27). The ends of the log on the rear side are cut at an angle so that the log will sit further back toward the rear wall. The bottom of this log is flat indicating the orientation of the log.
4. Position log 3 so that it is laying on the firebox bottom with the “Y” against the log grate leg (Figure 28). The bottom end of this log should just touch the side panel.
5. The 4th log is placed so that it covers the area around the gas supply lines and the electrical cables for the pilot assembly (Figure 29). The forked end will rest near the glass door.



Figure 28: Birchwood log No. 3 in place.



Figure 29: Birchwood log No. 4 in place.



Figure 30: Birchwood log No. 5 in place.



Figure 31: Birchwood log No. 6 in place.

6. Birchwood log 5 sits so that the top of the log just touches log 2 (Figure 30). This log will rest against log 2, and the bottom end of this log will be very close to touching the glass door.
7. Birchwood log 6 is leaning against both log 2 and the log grate Figure 31. There is a notch or scuff mark (inset) which indicates where this log makes contact with the log grate. The bottom end of this log should just touch the side panel.



Figure 32: Birchwood log No. 7 in place.



Figure 33: Birchwood log No. 8 in place.

8. Log 7 sits on the left-most grate support (Figure 32). This log should touch the 6th log and the base of this log will nearly touch the glass door.
9. Log 8 is cradled between the two middle log grate supports as shown in (Figure 33).



Figure 34: Birchwood log No. 9 in place.

10. The ninth and last log piece rests on the ember wool next to the 4th log and up against the front right leg of the log grate (Figure 34).
11. Finish the Birchwood log installation by spreading the contents of the ember chunks bag along the front area of the fireplace. Position these pieces so that the white sides of the chunks face outwards (Figure 35). **DO NOT PUT EMBER CHUNKS IN THE BURNER TRAY AREA.**



Figure 35: Ember chunks distribution.



Figure 36: Example of a desirable flame pattern.

Above image shows an example of how the flame pattern should appear once installation is complete.

© 2023 Copyright Pacific Energy Fireplace Products LTD

Reproduction, adaptation, or translation
without prior written permission is prohibited,
except as allowed under the copyright laws.



**For technical support, please contact
your retailer**

**Web site: www.townandcountryfireplaces.com
2975 Allenby Rd., Duncan, BC V9L 6V8**

Printed in Canada