



**SKU# 22150068**

# **TC42, BIRCHWOOD LOG SET & BURNER INSTALLATION MANUAL**



**Visit [www.townandcountryfireplaces.com](http://www.townandcountryfireplaces.com) for the most recent version of this manual**

---

## Contents of Package

---



Figure 1: TC42 Birchwood burner kit contents.

The Birchwood Log Set must use burner supplied with the kit.

---

## Burner/Grate Installation

---

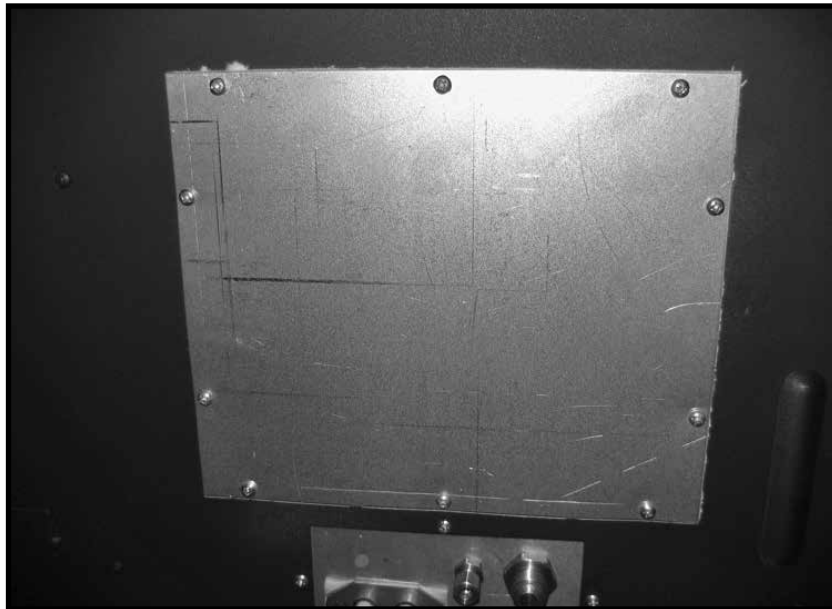


Figure 2: Access cover to valve control center.

- The decorative panels should be installed before the burner and log grate are installed. However, if the access cover to the valve control center (Figure 2) is to be removed, the panels will need to be installed later once the electrical connections are made and access cover has been reinstalled. See “Special Note regarding the access cover:” on page 3.

### Special Note regarding the access cover:

The access cover must be removed so that the pilot assembly wires can be attached to the control module. If the fireplace has not been positioned in its final location, access to the control module can be achieved without removing the access cover. If fireplace is in its final location, the access cover will need to be removed.

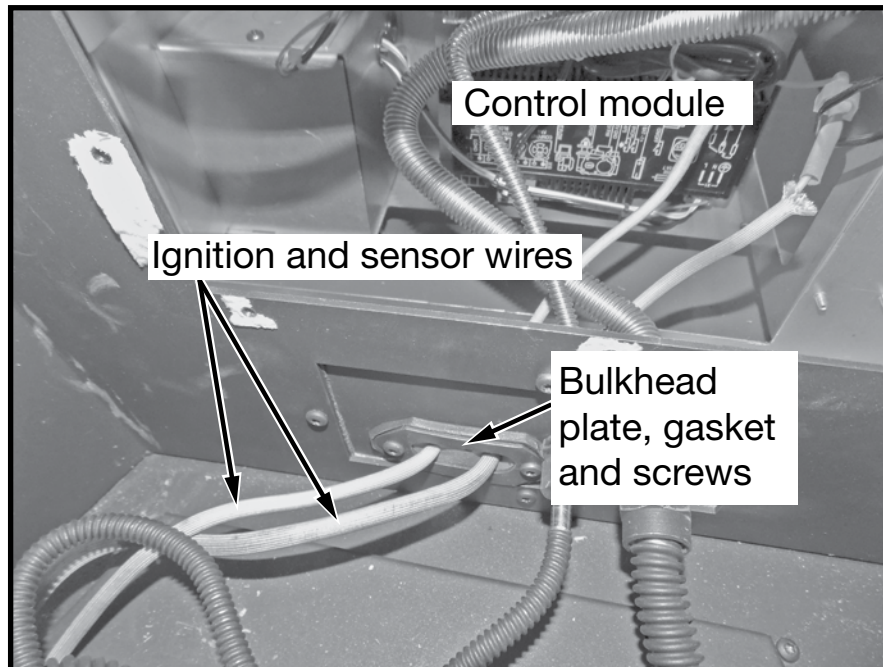


Figure 3: Ignition and sensor wires routing with access cover removed.

1. For ease of installation, place the burner tray onto the burner base plate but do not secure it to the burner base plate yet.
2. Remove the bulkhead screws, plate and gasket (Figure 3) to enable the ignition and sensor wires to be fed through the gasket and side wall and to the control module.

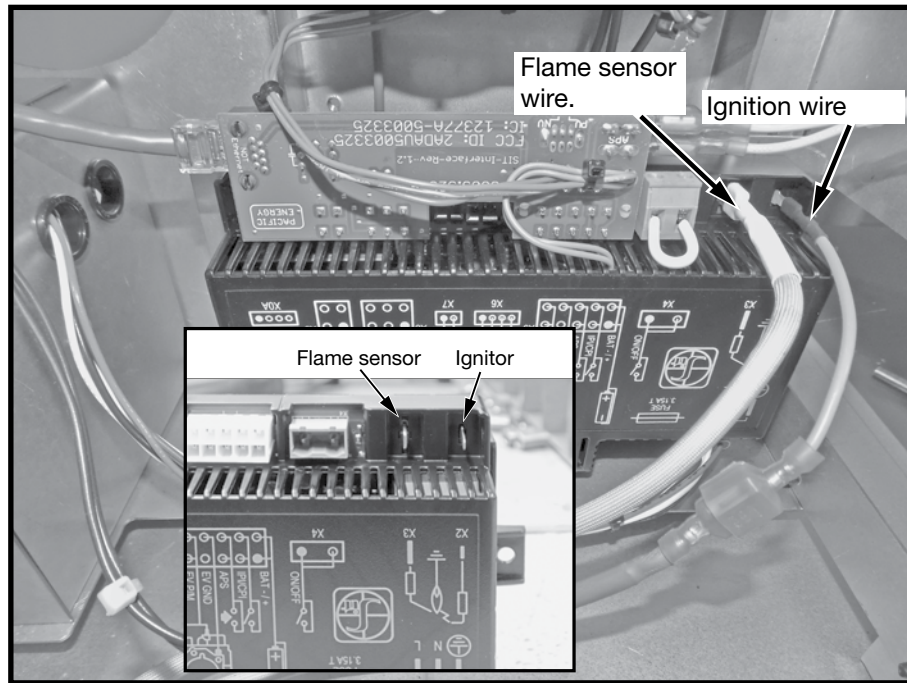


Figure 4: Control module & pilot connections.

3. Connect the ignition and sensor wires to the control module as shown in Figure 4.
4. Reattach the bulkhead plate, gasket and securing screws.
5. Reattach the access cover plate if it was removed.
6. Install the decorative panel set now while the burner is still able to be maneuvered. Refer to fiber panel set installation instructions located in the fireplace installation manual or porcelain panel installation instructions which is included in the porcelain panel set package.
7. Slide the burner to the left as far as possible without making contact with the decorative panels once the panels have been installed. This will provide room to connect the gas lines.
8. Attach the pilot and gas supply lines to the bulk head fittings and tighten (Figure 5). Ensure the connections are gas tight.



If installing this burner into an outdoor unit, please See “Outdoor Pilot Installation” on page 7 before continuing.

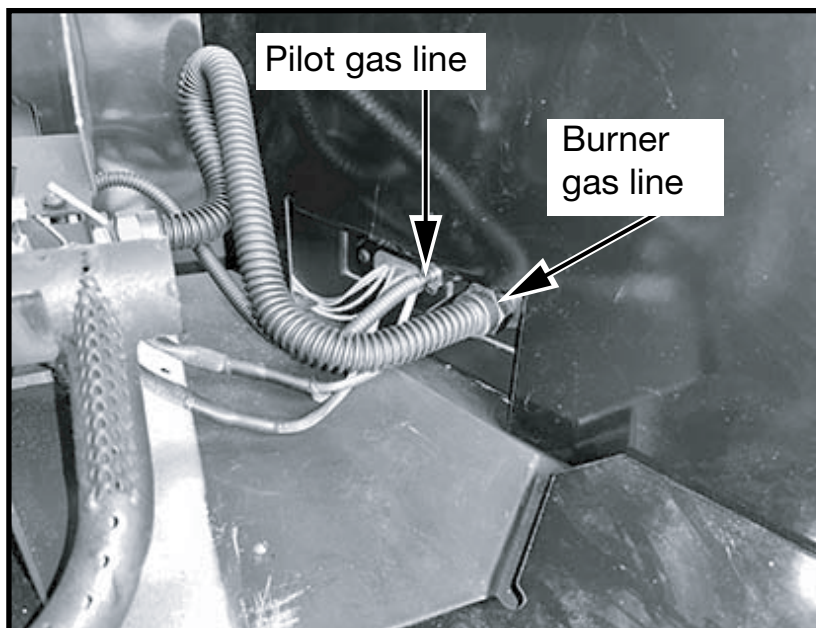


Figure 5: Gas line connections.

9. With the electrical and gas lines now connected, slide the burner back to the center of the firebox.
10. Locate the screws in the firebox bottom shield (Figure 6) and attach the burner using two long screws provided. Shift the burner back so that the key hole slots are secured with the screws (Figure 7).

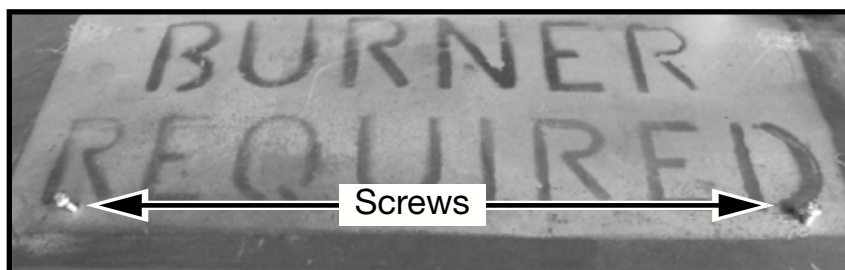


Figure 6: Burner base plate.

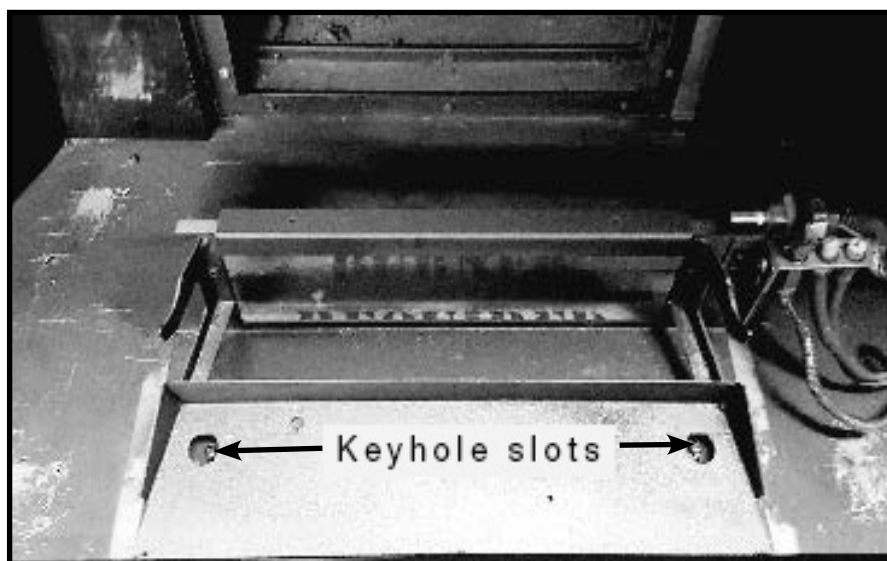


Figure 7: Mounting burner to firebox bottom shield.



Figure 8: Securing air deflector to the burner.

11. Install the burner to the base plate by sliding the air manifold of the burner over the orifice and lower into place (Figure 8). Secure the burner to the plate using provided hold down as seen in (Figure 9).

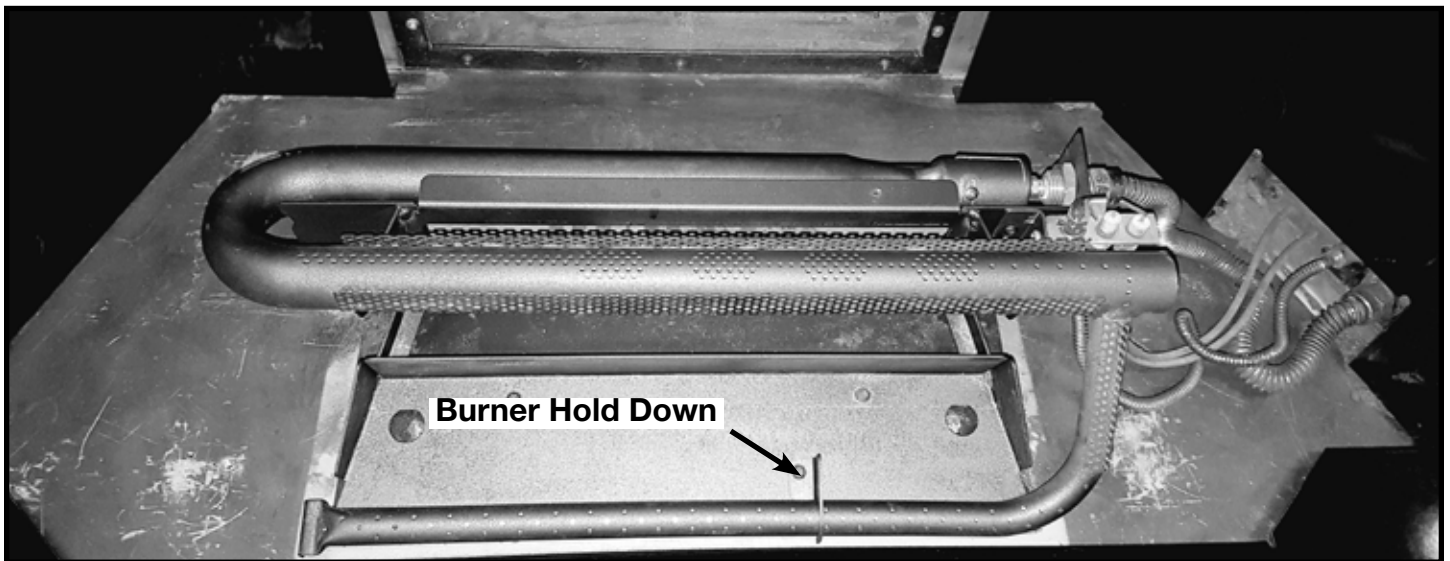


Figure 9: Securing log grate to the floor.

## Outdoor Pilot Installation

The TC36 Outdoor unit comes with the pilot assembly pre-installed. Follow the instructions below to remove the pilot that comes with the burner and attach the pre-installed pilot.

1. Loosen the screws securing the pilot mounting bracket to the back of the burner tray then slide the pilot and bracket up to disengage the bracket from the screws. (Figure 10)



Figure 10: Remove burner pilot.

2. Remove the pilot mounting bracket from the burner pilot by removing the two screws securing it to the pilot. (Figure 11)



Figure 11: Remove pilot mounting bracket.

3. Secure the pilot mounting bracket to the Unit pilot with the previously removed screws. (Figure 12)



Figure 12: Attach pilot mounting bracket to Unit pilot.

4. Engage the pilot mounting bracket over the screws in the back of the burner tray and tighten them to secure the Unit pilot in place. (Figure 13)



Figure 13: Attach the Unit pilot to the burner tray.



## Birchwood Log Kit Contents

The Birchwood Log Set comes with the following pieces:

Nine log pieces and a bag of ember material.

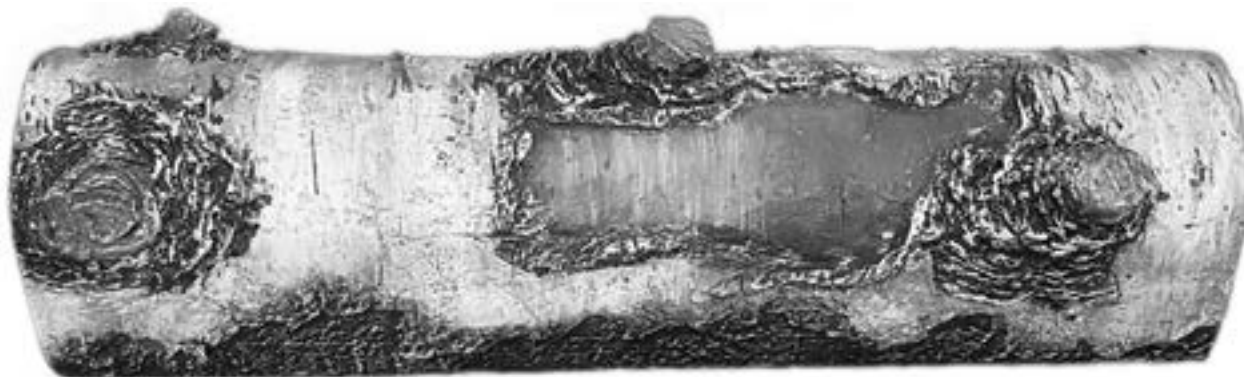


Figure 14: Birch Log No. 1



Figure 15: Birch Log No. 2



Figure 16: Birch Log No. 3



Figure 17: Birch Log No. 4



Figure 18: Birch Log No. 5



Figure 19: Birch Log No. 6



Figure 20: Birch Log No. 7



Figure 21: Birch Log No. 8



Figure 22: Birch Log No. 9



Figure 23: Ember Wool Bag

## Log set placement

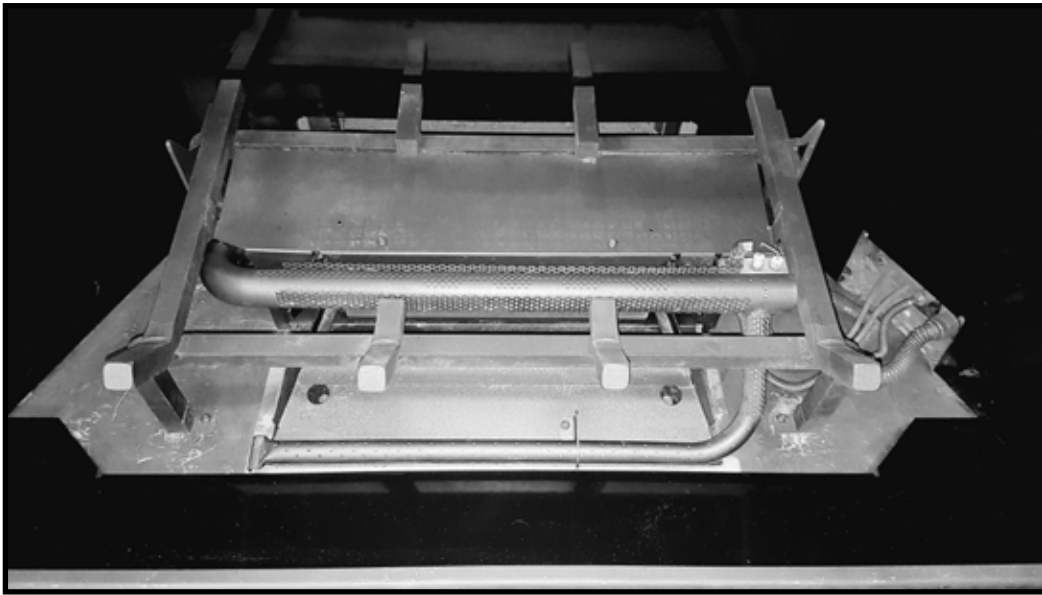


Figure 24: Burner and log grate installed.

1. With the burner, panels, and log grate pre-installed (Figure 24), spread the contents of the ember wool bag around the fireplace floor. Break the ember wool into small pieces then spread it over the upper and lower burner tubes. Cover the gas supply hoses and electrical cables and connections with ember wool (Figure 25) but do not cover the pilot assembly.



Figure 25: Ember wool distribution.



Figure 26: Ember bed in place.



Figure 27: Birchwood log No. 2 in place.

2. Place log 1 onto the log grate behind the support tabs as shown in (Figure 26). The log should be centered in the fireplace. The back of log 1 is hollowed out and the bottom is flat indicating the correct orientation. The back of log 1 should rest flat against the rear of the fireplace.
3. Place log 2 onto the log grate shelf just in front of log 1. Log 2 should be positioned so that the short-detailed edge is sitting flush to the front edge of the shelf (Figure 27).
4. Position log 3 so that the back of the log is leaning flat against log 1 and its side is against the log grate ((Figure 28). The bottom end of log 3 should just be touching the side panel as well as the bottom front panel.

**Special Note:** After Start up, if the tip of log 3 is directly in the flame, it should be rotated counter-clockwise to move the tip further back in the fireplace.

5. Place log 4 so that it sits between the two left-most grate supports and rests on log 3 (Figure 29). The base of log 4 should be sitting just in front of the lower burner tube.



Figure 28: Birchwood log No. 3 in place.



Figure 29: Birchwood log No. 4 in place.





Figure 30: Birchwood log No. 5 in place.



Figure 31: Birchwood log No. 6 in place.

6. Log 5 sits so that the cutout in the back of the log sits on the horizontal section of the log grate. The top end of log 5 should be resting on the right end of log 1 and just touching the side wall (Figure 30).
7. Place log 6 so that it rests in front of log 3 with the straight end just touching the side panel, close to the front glass. The forked end should be resting against the leg of the log grate (Figure 31).
8. Log 7 is placed so that it covers the gas supply lines and pilot cables. The forked end will be just resting on the bottom front panel with one side of the fork touching the side wall (Figure 32).
9. Log 8 rests on the bottom front panel partially in the ember wool. Log 8 is evenly spaced between log 7 and log 5 (Figure 33).
10. The final piece, log 9, is cradled between the two middle log grate supports as shown in (Figure 34).



Figure 32: Birchwood log No. 7 in place.



Figure 33: Birchwood log No. 8 in place.



Figure 34: Birchwood log No. 9 in place.



Figure 35: Example of a desirable flame pattern.

Above image shows an example of how the flame pattern should appear once installation is complete.



© 2023 Copyright Pacific Energy Fireplace Products LTD

Reproduction, adaptation, or translation  
without prior written permission is prohibited,  
except as allowed under the copyright laws.



**For technical support, please contact  
your retailer**

**Web site: [www.townandcountryfireplaces.com](http://www.townandcountryfireplaces.com)  
2975 Allenby Rd., Duncan, BC V9L 6V8**

Printed in Canada